



# MONTHLY MEMBERSHIP PROGRESS REPORT

District 2 T1

Results as of: 06/30/2019

GMT: OPEN

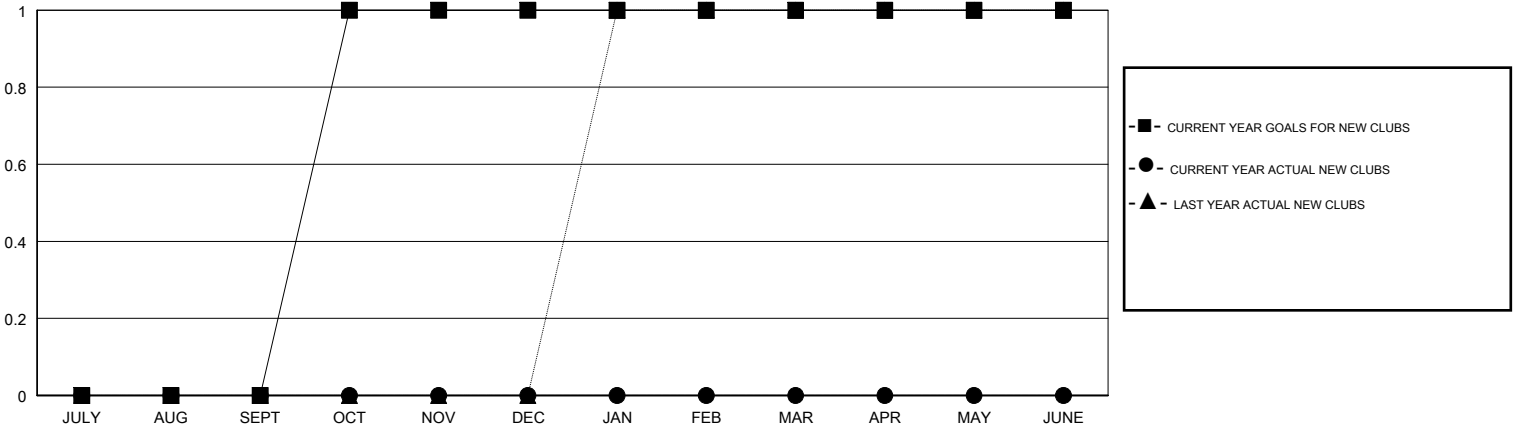
LOCATION TEXAS

GMT CA

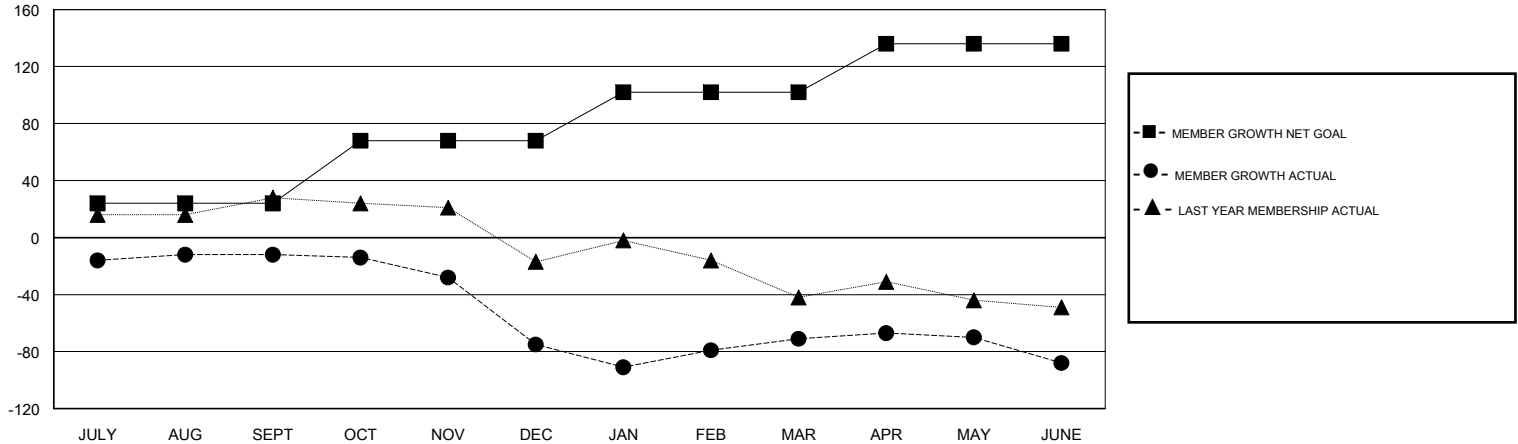
Clubs			
RESULTS FOR 2018-2019			
QUARTER	NEW CLUB GOAL	NEW CLUBS	DROPPED CLUBS
JULY/AUG/SEPT	0	0	1
OCT/NOV/DEC	1	0	2
JAN/FEB/MAR	0	0	0
APR/MAY/JUNE	0	0	0

Members			
RESULTS FOR 2018-2019			
QUARTER	MEMBER GROWTH NET GOAL	MEMBER GROWTH ACTUAL	DROPPED MEMBERS ACTUAL (including transfers)
JULY/AUG/SEPT	24	42	50
OCT/NOV/DEC	44	36	95
JAN/FEB/MAR	34	68	37
APR/MAY/JUNE	34	23	40

GOALS AND ACTUAL NEW CLUBS CUMULATIVE



GOALS AND ACTUAL MEMBERS CUMULATIVE



<b>DROPPED CLUBS: 3</b>
-------------------------

24 CLUBS OF 38 ADDED 1 OR MORE NEW MEMBERS

GENDER DISTRIBUTION	
MALE	826 (69.82%)
FEMALE	357 (30.18%)
Women Percentage Fiscal Year Goal: 40%	

DROPPED MEMBERS	
DECEASED	14
CLUB CANCELLED	32
OTHER	176
<b>TOTAL</b>	<b>222</b>

[CLICK HERE FOR CUMULATIVE MEMBERSHIP DATA](#)

TOTAL FAMILY UNIT MEMBERS	136
FAMILY MEMBERS PAYING HALF DUES	68